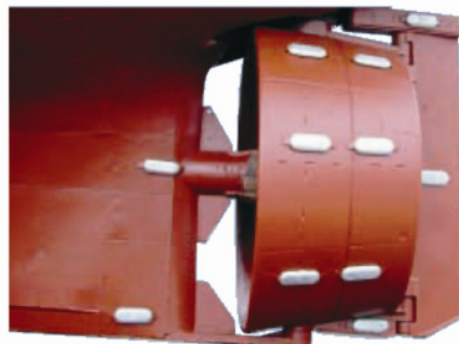


MARINE NOZZLES DUZE NAVALE

Where are nozzles used?

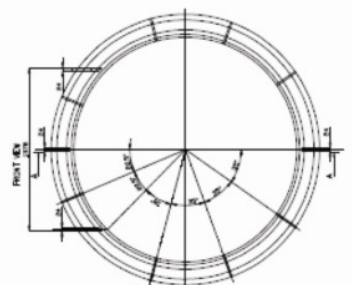
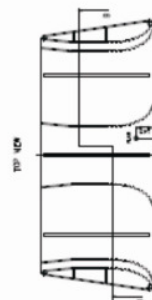
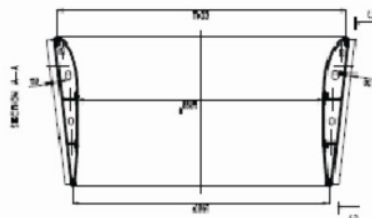
Generally, Kort Nozzles can be designed and supplied for all types of vessel, but are particularly suited for the following ship types:

- Tugs and pusher tugs
- Fishing vessels
- Research vessels
- Supply vessels and special ships
- Dredger and cable - laying vessels
- Inland-water vessels
- Vessels with full aft - end forms



Why are nozzles used?

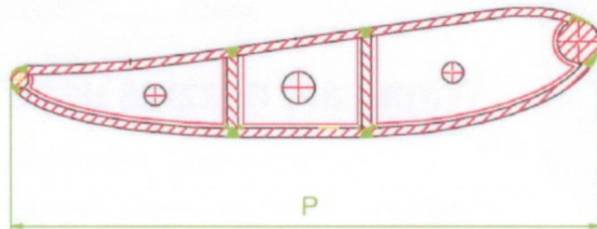
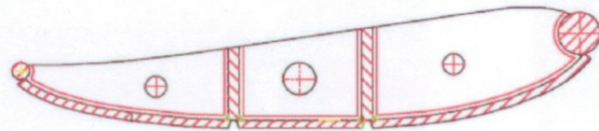
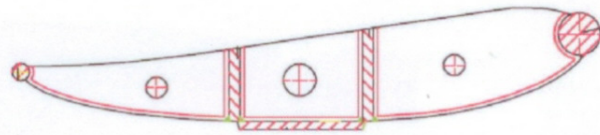
- For superior propulsion and increased thrust
- Protective safety device for propeller
- Pitch - quenching at sea
- 10 % greater efficiency using specially designed nozzles
- Reduction of vibrations
- Increased side forces and side thrust with Kort Steering Nozzles, fitted with Becker Flap
- Reduced turning circles
- Safety in ice
- Superior astern manoeuvrability





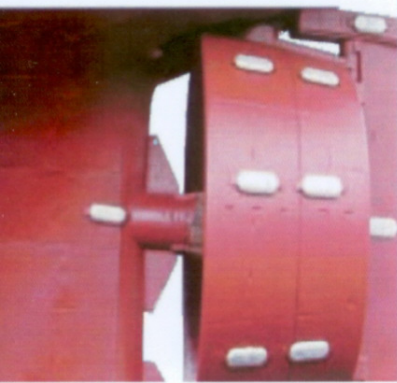
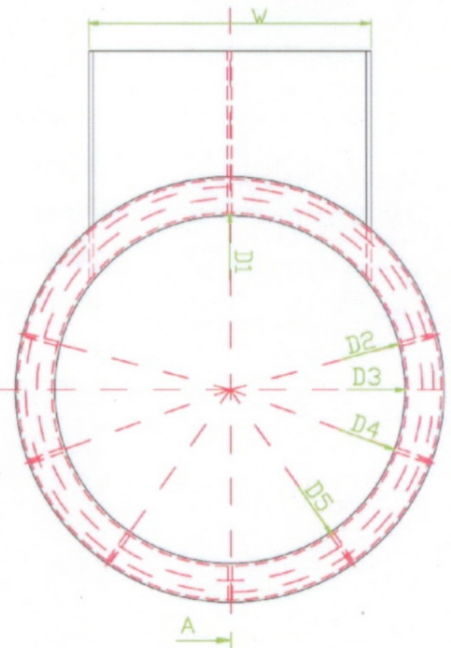
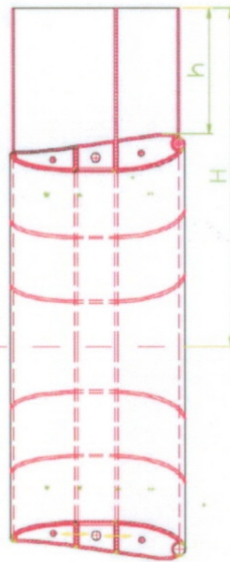
www.elcris.ro

NOZZLE CONSTRUCTION STAGES



Section A-A

Front view A



ELCRIS SRL

19 Florian Mandache street , Oltenita - ROMANIA

Tel: +4 / 0242515013 ; Fax: +4 / 0242515168

E-mail: info@elcris.ro

www.elcris.ro